



### Chairman.

Peter Donovan  
01924 406749

### Secretary.

Chris Park  
01226 764559

### Treasurer.

Pat Cliffe  
01457 873901

Meeting every 2<sup>nd</sup> Thursday of month, at 7pm in the Wooldale Community Centre, Robert Lane, Wooldale, Holmfirth, Huddersfield. HD9 1XZ. Website: [www.huddersfieldwoodturners.org.uk](http://www.huddersfieldwoodturners.org.uk)

## January 2012 Newsletter.

My dear friends,

Welcome to another new year, in which we hope to arouse, stimulate, cajole, intrigue, and mesmerize you into enjoying a little more Woodturning. Perhaps, had you not even been near your workshop last year, your major New Years resolution, is to go forth and enjoy some Woodturning. Already I hear your cries of "Onward you fool", as you gallop into that workshop to find that piece of wood to make "A Simple Bowl" for February's competition. Fame, but not fortune will follow your success....and so to .....

Last week we had **Mark Raby** entertain, stimulate, mesmerise and instruct us in the art of **Finishing, Staining and Colouring**. Because mark made some notes available to buy for a small donation, I will be paraphrasing these which will give an accurate picture of techniques used.

- On finishing: never jump more than 100g at a time; finish the work with a Webrax/Nyweb pad; **DON'T touch** the work; use cloth to remove fine dust.
- Always use Safety cloth to apply finish, never use kitchen towel...it's for soaking up.
- Stain always goes on bare wood; blend stains for the effect you want; THEN seal the wood with either Cellulose sanding sealer or Acrylic S.S.; de-nib, clean with cloth; once dry apply Finish: Use any of following: Melamine Lacquer, Acrylic Gloss, Carnauba Wax, or Friction Polish. When totally dry you can apply Burnishing cream.



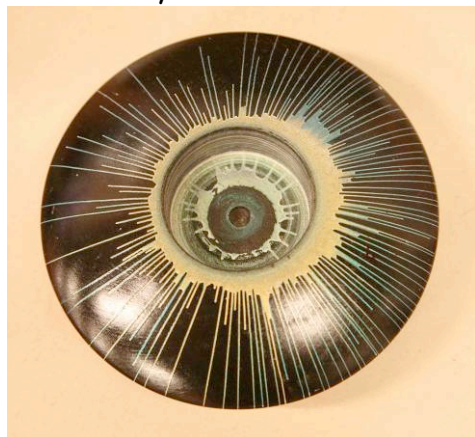
Mark Raby



Coloured and sanded work



JoSonja coloured finish



Created with centrifugal flow



Limed waxing on Ash wood



Using Banding to make segments

- Remember the **HOT FINGER RULE**...don't sand when it's hot.
- Other finishes on wood which Mark showed us were: Liming (over stain, and use gloves to apply the wax), seal the stain before liming to keep vibrant colours; let the wax dry before removing with a little oil. Gilt creams are applied like Liming wax
- For using **OILS**, don't seal the wood, and on final sand use oil with Webrax. Allow to dry between coats, and de-nib. Once fully dry it can be buffed or waxed.
- Mark also showed us the **Jo Sonja** Iridescent and Metallic finishes. The iridescent ones **MUST** go over a dark background and seal with Acrylic sealer.
- The banding is used to make segmented areas into which you can stain or add other forms of colouring. The beauty of the banding is that they don't leach colour under the banding

Overall, a good display of creative finishing ideas. Time for us to go away and put one or two of the ideas into practise.

### Club News.

Not a great deal to report at the moment as the year is just getting underway.

- **Mark Mercer** has finished 2 of the new cupboards and are to be installed asap. A valiant effort mark.
- Next months demonstrator is **Martin Pidgeon**, from Louth doing .....a surprise.
- Our first competition of the year is "a **simple Bowl**" which can be any size, shape, colour, as long as it is a simple shaped bowl. Just thought that I would put all the competitions in this report so you can do them in your own time, and not wait to be announced. All subjects were chosen by **YOURSELVES** at the **AGM**.

12<sup>th</sup> April.....Egg and egg-cup or spoon

14<sup>th</sup> June.....Garden theme item

9<sup>th</sup> August.....Deep hollow vessel

11<sup>th</sup> October.....Candle holder / Pen

13<sup>th</sup> Dec.....A Toy

It is to be hoped that the items entered into competitions will go towards our Sale fund to sell at shows/Hensteeth.

- Our next 2 demonstrators are **Andrew Hall** and **Bob Neil**.
- Next meeting will see **Richard Ogle** in charge as Peter is away.
- If you have any interesting Hints and Tips please don't hesitate to send them to me to pass on.
- It was good to see some items that **Doug Burgess** brought last meeting to sell, all proceeds going solely to club funds. You can do the same....anything that is useful and you don't use anymore.....what an opportunity!!!!
- I still haven't had any offers for the club lathe...the **NuTool-37 lathe**. 37" between centres, 12" Diam over bed, 5-speed, 240v, 250w. You could just use the headstock and use it as a sanding machine by making an attachment.....offers in the region of £50

Well folks, as they say, that's all for now. The weather is being most kind to us so **NO** excuse not to get into the shed or Garage and get a bit of Turning done, just to keep your skills "turning" over.

**Chris Park**, (secretary of Huddersfield & District Woodturners)